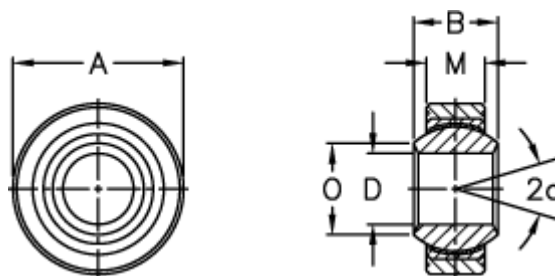


Article number: 03404030

Description: Fluro Rod end GLRSW 30

Measures



A	= 66	Static load C0 (kN) = 281
a (degrees)	= 17	Weight = 540
B	= 37	
D	= 30	
Dynamic load C (kN)	= 168	
M	= 25	
O	= 34.8	
Permissible rpm	= 130	